



شركة الشريف للتجارة العامة
ALSHARIF GROUP
TRADING - EXPORT - IMPORT

COMPANY PROFILE

EST . 2016

HEADLINE

PT. ALSHARIF GROUP INDONESIA | PT. ALSHARIF JAYA GROUP

Perkantoran Cempaka Putih . Jl. Jend. Suprpto No. 160 Blok A9
Jakarta Pusat, Indonesia - 10640

alsharif21trading@gmail.com || (021) 21241443

ABOUT US

Alsharif trading established since 2013 also known for PT Alsharif Group Indonesia as holding trademark. Alsharif Group has adapted a trust and integrity. As leading distributors of commodities in indonesia. Our clients and supplier not only provide immediate and reliable service but to continually exceed expectations and goals.

For decent years Alsharif Group has been providing to support and services to all major industries, marketplace and traders in the indonesia region.

ABOUT US



Alsharif Group's operational development is guided by its vision and mission that help to keep the Company's performance and strategy focused towards target achievements and success as a Good Corporate Citizen. The vision and mission help Gajah Tunggal to always strive for its ideals by guiding the management and employees as they work together for common goals that will contribute to the long-term success of the Company.

VISION

Making a trustworthy trading company that has access to global marketing in domestic and abroad networks.

MISSION

- Producing goods that support trade
- Improve employee welfare through productivity
- Carry out and cross-border trade transactions
- Making customer satisfaction a top priority through quality product

COMPANY VALUES

Collaborative

Build synergistic cooperation

Customer Focus

Serve customers better by indentifying, understanding and satisfying customer needs, wants, expectations.

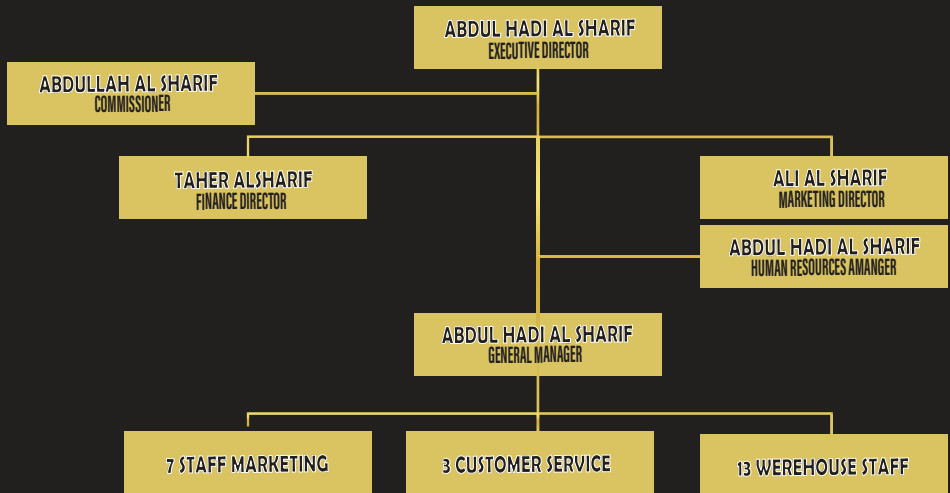
Teamwork

The ability to direct each individual or group of individuals to be able to work together towards the successfull achievement of the company's vision, mission, goals

Integrity

Unwavering steadfastness in upholding values, beliefs and principles

STRUCTURE ORGANIZATION



CORPORATE IDENTITY

Company Name	: Alsharif Group
Tax No	: 75.821.388.8-406.003
Director	: Abdul hadi Al Sharif
TDP	: 10.06.1.79.31439
TDUP	: 503/1792/TDUP/DPMTSP/2017
Established Since	: 2016
Head Office	: Jl. Letjen Suprpto no. 160 Blok A9, Jakarta Pusat
Telephone	: (021) 21241443
Email	: Alsharif25Group@Gmail.com

INDONESIA MAP





PALM OIL/ COOKING OIL



Palm oil is used as a raw material for various products such as soap, detergents, and other products.

RBD palm oil is an industrial raw material sold in various commodity markets around the world. fruit produc-

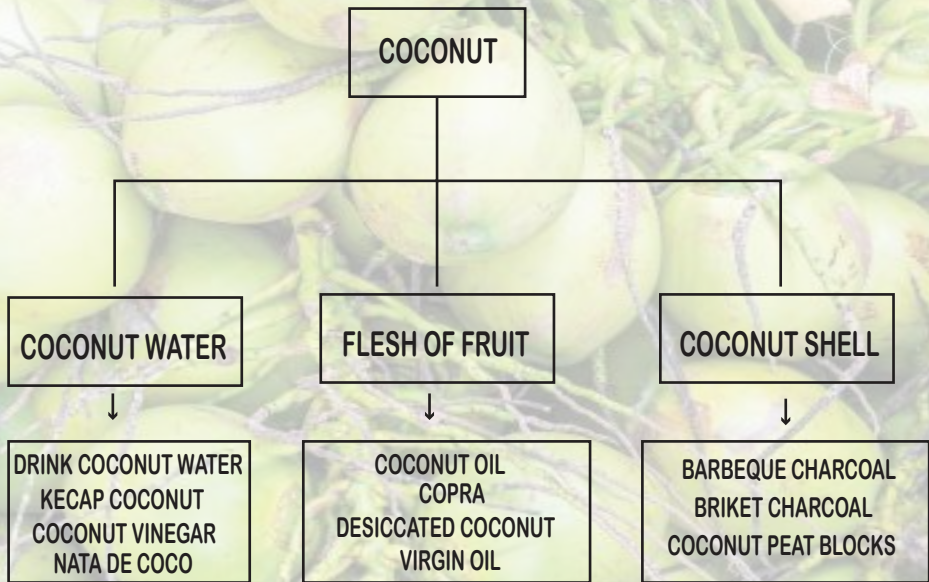
OUR PACKAGING FOR COOKING OIL



Palm oil is a very important requirement, especially for cooking daily meals.

From the total production, all must be packaged in packages that suit their interests.

“COCONUT DERIVATED PRODUCTS”



Some of the processed coconut products are potential developed by community, including coconut oil, shell charcoal, and charcoal briquettes. Meanwhile, for economies of scale more broadly, processed products that can be developed is coconut flour and coconut shell flour. From several product alternatives coconut derivatives that have been developed in the community, the product cooking oil is a product. the most potential coconut derivative to be developed further.



Coconut has a lot of features so that there is not the slightest will be left, all parts of the tree can be used from leaves to roots.

Coconut oil has a variety of content that is good for health, such as lauric acid and saturated fat, these types of fat can be used by the liver to produce energy for the body.



OUR PACKAGING FOR CHARCOAL



COPRA



copra is the raw material for making coconut oil and its derivatives, our copra has high quality with fresh coconut meat. copra is made from dried coconut flesh.

DESICCATED COCONUT



Desiccated Coconut is dried coconut meat grated (max moisture content 3%), with fresh coconut meat without added sweetener. Desiccated Coconut is used as a food ingredient

BRIKET CHARCOAL



Coconut charcoal briquettes are block charcoal made from coconut shell charcoal which is printed using natural binding tools. As a fuel, this charcoal is hotter and more durable than normal charcoal. very suitable for use as fuel for shisha

BARBEQUE CHARCOAL



Barbecue charcoal is coconut shell charcoal molded using tapioca starch to bind the charcoal, which is a 100% food grade product that is extracted from the roots of the plant type manihot esculenta (cassava), which definitely makes this charcoal even hotter. Usually this charcoal is used for barbecue

COCONUT OIL



Coconut oil, or copra oil, is an edible oil extracted from the kernel or meat of mature coconuts harvested from the coconut palm (*Cocos nucifera*). It has various applications. Because of its high saturated fat content, it is slow to oxidize and, thus, resistant to rancidification, lasting up to six months at 24 °C (75 °F) without spoiling.

VIRGIN OIL

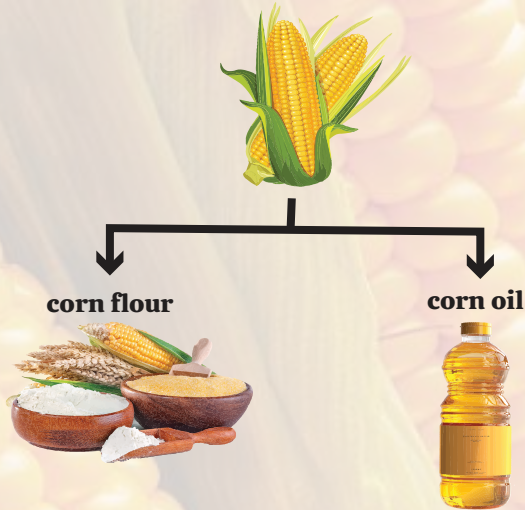


Virgin coconut oil is the oil extracted from coconuts without the application of heat. It is rapidly gaining popularity throughout the world in comparison to ordinary coconut oil and for a good reason. There is, in fact, a substance called virgin coconut oil and it differs from regular coconut oil in significant ways. These differences mainly lie with the source (more specifically, the physical form of the source), the method of extraction, and its subsequent benefits.

Coconut is mostly found in Asian and Pacific countries which produce 5.3 million tons (82%) of world production covering 12 countries

The benefits of copra are the raw materials for making coconut oil and its derivatives.

“Corn Products,”



**corn flour
processing machine**



**corn oil
processing machine**



corn field



Corn is one of the most important carbohydrate-producing food crops in the world. At present, corn has also become an important component as a source of food oil and the basic ingredient of cornstarch. Various corn derivative products are used as raw materials for various pharmaceutical, cosmetic, and chemical industrial products.

Corn has many benefits for the body because of its nutritional content, including the benefits of reducing hypertension so that it can prevent heart disease.

Corn can control diabetes, improve digestion, prevent constipation and hemorrhoids because corn is rich in fiber, it can even reduce the risk of colon cancer. Java, Jambi, Aceh, North Sumatra, North Sulawesi,

PREMIUM COFFEES QUALITY,

AVAILABLE WITH US

ARABICA BALI
FULL WASH



ARABICA BALI
NATURAL GRADE



ROBUSTA BALI
GRADE 1



ROBUSTA TENGGUNG
GRADE 1



ARABIKA BALI

FULL WASH



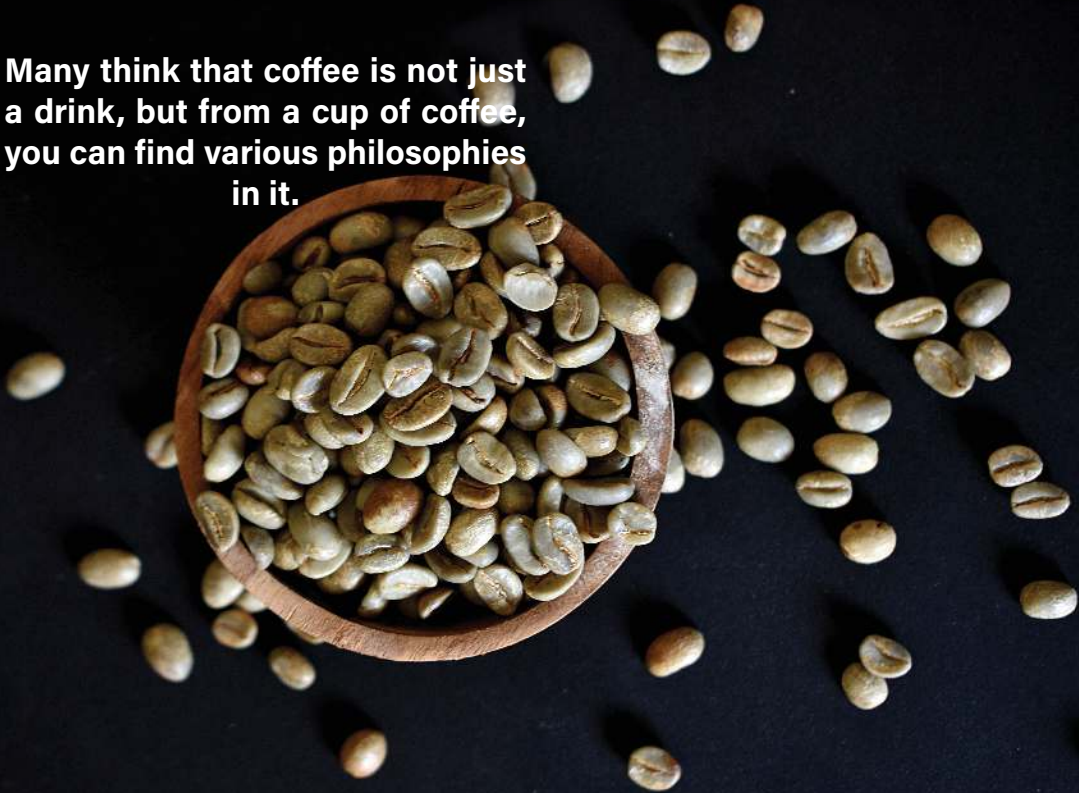
The full washed process in coffee processing aims to remove mucus by immersing it in water. The soaking process will take up to 12 hours. Then do the soaking process, so that the coffee beans will be free from this mucus, then rinsed and start drying. Coffee beans with a full wash process do have many washing steps. It will be seen that there are sinking and floating, if the ripe coffee cherries will sink while the unripe ones will float. Then proceed with separating the coffee beans from the fruit and generally this stage uses a machine.

Bali Arabica coffee is taken from premium coffee beans which are planted in the Bali area at an altitude of 1100 - 1200 masl.

Arabika Bali Full Wash is one of the original Indonesian single origin coffees which is famous for its enjoyment that has been recognized by the world.

ARABIKA BALI NATURAL GRADE

Many think that coffee is not just a drink, but from a cup of coffee, you can find various philosophies in it.



Natural process is the process of drying coffee directly with the fruit. In essence, the fruit is picked from the tree, then dried directly in the sun. Coffee is dried in the sun until it reaches a moisture content of 12-13% and then peeled into green beans. This process can take a long time, which is between 30-45 days.

The hallmark of Bali Arabica coffee is the addition of a fruity taste. There is a unique citrus taste. Because the coffee plantation is placed next to the oranges.

Natural process is the process of drying coffee directly with the fruit. In essence, the fruit is picked from the tree, then dried directly in the sun.

ROBUSTA BALI GRADE 1



Bali Robusta Coffee, known for its strong taste, and strong and fragrant aroma.



Determining the grade of coffee is very important. Premium coffee is coffee with a high grade or (grade 1), because it has a very small value of defects that makes the coffee premium. The advantage of high grade coffee is that it makes the best coffee with the best growing process, high grade coffee has good resistance to pests and diseases, Richer Aroma and Taste, Robusta coffee has a large caffeine content, this arises from the bitter taste produced from the coffee.

Robusta coffee originating from Bali. It has a tantalizing chocolate scent because it is planted close to the chocolate plant.

According to SCAA standards, coffee grades are divided into grades 1 to 5. Grade 1 is the highest quality coffee bean with a total defect of < 5 beans per 300 grams.

ROBUSTA TEMANGGUNG GRADE 1



The aroma of Temanggung robusta coffee is not as strong as Temanggung Arabica coffee, with a medium to heavy body viscosity and a bitter taste. The taste of Temanggung Robusta coffee and its unique aroma make this Temanggung coffee a national champion continuously, making it Temanggung coffee the best in the world.

The taste of Temanggung Robusta coffee and its unique aroma make this coffee from Temanggung to make it the best Temanggung coffee in the world.

Robusta coffee comes from the word 'robust' which means strong, according to the description of the posture (body) or the level of its strong viscosity.



**SPICES
& HERBS
INDONESIA**

“SPICES,,



Jahe sangat harum ketika dicium. jahe juga dikenal dengan baik sebagai tanaman herbal, cara menyajikanya membakarnya lalu digeprek dan dicampurkan ke dalam segelas air hangat. Diminum ketika hujan turun atau saat masuk angin akan membuat tubuh terasa hangat



TURMERIC is often used as a spice in dishes such as curry, and is also used to give food a yellow color, or as a preservative. Turmeric has bright prospects in the downstream industrial sector in various forms such as extracts, oils, starch, food/beverages, cosmetics, pharmaceutical products and IOT/IOT.



Candlenut is a plant whose seeds are used as a source of oil and spices. Candlenut oil is claimed to be able to thicken hair and until now, many pharmaceutical industries are processing candlenut into oil to thicken hair.



Nutmeg is used as a spice in various cuisines around the world. In addition, nutmeg is delicious as a cooking spice, this spice contains essential oils which are components of mixtures for perfumes and soaps.



The aroma is fragrant and has a sweet and spicy taste, that is cinnamon. This spice is very famous in the culinary world because it is often used for cooking spices, especially those processed by burning to warm drinks.



Lawang flower is also known as star anise because of its star-like shape. The aroma is so distinctive and gives a delicious taste in cooking. Usually, Lawang flower is used as an additional component for brewing tea. Bunga Lawang or Kembang Lawang or deaf is a spice that has a taste similar to anise. This spice is widely used in the cuisine of Asian countries.

Spices are plant parts derived from flowers or other plant body parts used as spices, flavor enhancers, fragrances.

Robusta coffee comes from the word 'robust' which means strong, according to the description of the posture (body) or the level of its strong viscosity.



Cloves are native to Indonesia, widely used as a spice in spicy dishes in European countries, and as the main ingredient in Indonesian kretek cigarettes.



Black pepper is the fruit of the pepper tree. Black pepper has a spicier taste than white pepper. Because it has gone through several soaking and washing processes, the taste of white pepper is lighter.



White pepper is the seed of the pepper tree. Pepper is also called pepper or sahang, which has the Latin name *Piper nigrum* is a plant that is rich in chemical compounds, such as pepper oil, fatty oil, and starch. Pepper is slightly bitter, spicy, warm, and antipyretic

“HERB,”



Lemongrass is a plant belonging to the grass tribe that is used as a kitchen spice to scent food. Lemongrass oil is an essential oil obtained by distilling the top of the plant. Lemongrass oil can be used to repel mosquitoes



Bayleaf is the name of a tree that produces spice leaves used in cooking. bay leaves will make the aroma of the dish stronger when served. Usually the bay leaves will be dried in the sun to dry before being processed into cooking.



Citrus leaves can also be used as an aroma enhancer in cooking. It has quite thick leaves, usually the leaves from the kaffir lime tree will be finely chopped. Or it can be kneaded first before being mixed into various dishes

In general, herbs are plants that are recognized and closely related to its use in maintaining vitality and health, growth and healing of various diseases.

Consumption of -based food and drink spices are now starting to appear and become dishes in culinary tour



Vanilla is one of the most important and expensive spices in the world after saffron and cardamom because vanilla requires a lot of labor to get it used in the food industry (60%), cosmetics (33%), and as an aromatherapy ingredient (7%).



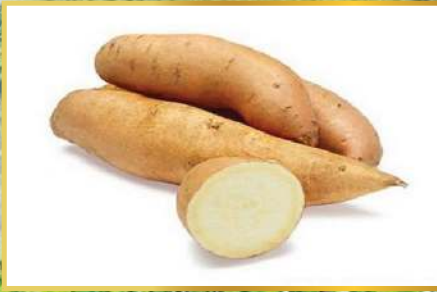
COCOA BEAN



vanilla is used in the food, cosmetics, medical, perfume and other industries.

Cocoa beans are the basic ingredient of chocolate making and traditional cooking.

SWEET POTATO



POTATO

This plant is an annual herb (non-woody short plant) and likes a cool climate. In the tropics it is suitable to be planted in the highlands. Potato tubers have now become one of the important staple foods, potatoes are still considered a luxury vegetable. However, potatoes are a delicious and very nutritious food.

Potatoes are a delicious and very nutritious food. This potato water compress is known to be very helpful in treating wounds on the

Known as sweet potatoes, huwi boled (Sundanese), tela rambat (Java), sweetpotato (English), and shoyo (Japan) are sources of carbohydrates

CASSAVA & PEANUT



In general, cassava is processed by frying and boiling. Cassava is also known as a raw material for tapioca flour.

Peanut plants can be used for animal feed, while the seeds are used as a source of vegetable protein, oil



FRUIT

Healthy

BEST CHOICE FRUIT



PINEAPPLE



MANGO



DRAGON FRUIT



SNAKE FRUIT (SALAK)



AVOCADO

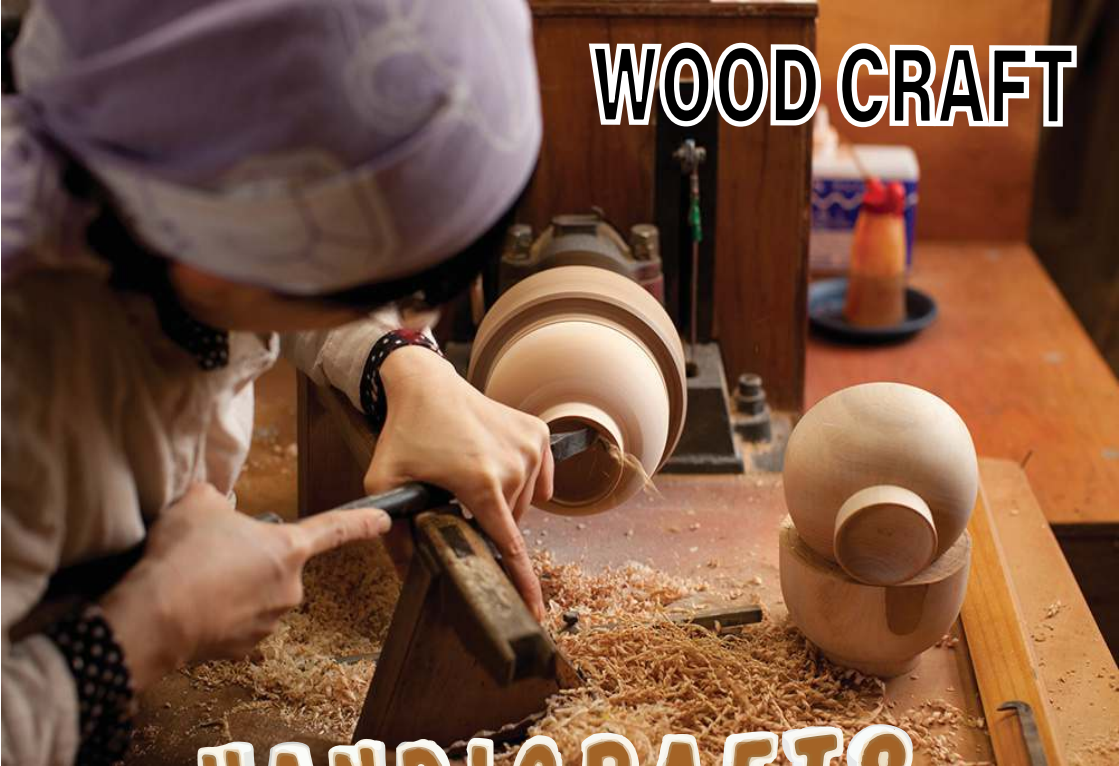


Indonesian fruit production has good quality. In fact, many judge the quality of the best tropical fruit in the world to come from Indonesia.

Indonesia is a country that is rich in fruit plants, in fact almost every region has a center and local fruit production and others.



WOOD CRAFT



HANDICRAFTS

AND



FURNITURE

handicraft products made of wood with a simple and attractive design. Wood Craft is able to produce in large quantities, high quality, and in a short time.

Each piece of wood was made with careful to create a unique wooden products. Extraordinary products that will match your daily routines and furnitures. fruit production and others.

RATTAN CRAFT



Rattan basket is a cultural product that cannot be separated from technology, and its development efforts are within the scope of creative industry. To produce a basket that meets the criteria, a model is needed. The model is a pattern of basket to be generated.



Rattan is a non-timber forest product (NTFP) plant that thrives in the jungles of Indonesia.

Natural rattan can be used as raw material for rattan handicraft products. Various designs, and developments are carried out to make handmade products

PAPER



WOOD FIBER BOARD



WOOD PULP



Wood is used for various purposes, ranging from cooking, making furniture, building materials, paper materials.

the benefits of wood pulp for making writing paper and tissue, almost all types of paper come from pulp



RUBBER TIRE



ACCUMULATOR



RUBBER

Rubber is the main material for making tires, some medical devices, tools that require flexibility and shock resistance.

accumulator is a device that can store energy refers to batteries, capacitors, compulsators

KAPOK



YARN

The woody part of the kapok plant can be used for making paper, doors, furniture, boxes and toys.

Yarn is a long fiber, used for textile production, sewing, crocheting, knitting, weaving, and mining. Yarn can be made from many synthetic or natural fibers.

AGARWOOD & OIL OUD





Agarwood has a truly unique fragrance that cannot be compared to any other fragrance. When used in aromatherapy, agarwood oil can help with anxiety, stress, depression, and nervous system disorders

Gaharu is a blackish wood and contains resin. This resin is used in the perfume industry (perfume and setanggi) because it smells good.



PATCHOULI

Patchouli is a tropical shrub that produces a type of essential oil called the same (patchouli oil). This plant is commonly used for its leaves for oil extraction, and processed into perfumes, incense ingredients, essential oils, insect repellents, and used in the cosmetic industry. In international trade, patchouli oil is known as patchouli oil (from the Tamil patchai (green) and ellai (leaf), because the oil is distilled from the leaves). The aroma of patchouli oil is known to be 'heavy' and 'strong' and has been used for centuries as a perfume and an ingredient in incense or setanggi in eastern traditions. The selling price of patchouli oil is among the highest when compared to other essential oils.

This plant is commonly used for its leaves for oil extraction, and processed into perfumes, incense ingredients, essential oils, insect repellents, and used in the cosmetic industry.

The scent of patchouli oil is considered 'luxury' according to European perceptions, but people agree that the scent is soothing.

GUM DAMAR (GETAH DAMAR)

GUM DAMAR ABX



GUM DAMAR CD



GUM DAMAR POWDER



Gum damar is used in industry for cosmetics, textiles, paint factories, inks, glass, matches, incense, and others.

For cat's eye resin, it is widely used for emulsion (mixture) of dyes, paints, inks, aromatics for food, and even for cosmetics.



شركة الشريف للتجارة العامة

ALSHARIF GROUP

TRADING - EXPORT - IMPORT



Abdul Hadi Mohammed Al Sharif



(021) 21241443

0812-9000-4460



Alsharif25group@gmail.com



Perkantoran Cempaka Putih Block A9

Jl. Let. Jend. Suprpto No. 160

Jakarta Pusat, Indonesia - 10640



شركة الشريف للتجارة العامة
ALSHARIF GROUP
TRADING - EXPORT - IMPORT

HEADLINE

PT. ALSHARIF GROUP INDONESIA PT. ALSHARIF JAYA GROUP